



Prüfbericht - Nr.: 0114044541m3 002		Seite 1 von 6	
<i>Test Report No.:</i>		<i>Page 1 of 6</i>	
Auftraggeber: <i>Client:</i>	Chi Mei Corporation 59-1, San Chia, Jen Te, Tainan City 71702, Taiwan, R.O.C.		
Gegenstand der Prüfung: <i>Test Item:</i>	PC Alloy		
Bezeichnung: <i>Identification:</i>	WONDERLOY® PC-540 / Nature		
Anlieferungszustand: <i>Delivery condition:</i>	apparent good	Eingangsdatum: <i>Date of Receipt:</i>	2015-12-14
Prüfört: <i>Testing location:</i>	TÜV Rheinland (Shanghai) Co., Ltd.		
Prüfgrundlage: <i>Test specification:</i>	According to RoHS (recast): Restriction of the Use of Certain Hazardous Substances in Electrical and Electronic Equipment, 2011/65/EU last amended by (EU) 2015/863: Total Content of Lead, Cadmium, Mercury, Chromium VI, Polybrominated Biphenyls, Polybrominated Diphenyl Ethers; and Benzylbutyl phthalate (BBP), Dibutyl phthalate (DBP), Bis(2-ethylhexyl) phthalate (DEHP), Diisobutyl phthalate (DIBP) and Halogen (Chlorine, Bromine)		
Prüfergebnis: <i>Test result:</i>	The test results are the measurements, stated in the test report.		
geprüft/ tested by:	kontrolliert/ checked by:		
			
2016-01-22 Anne Chen /Coordinator		2016-01-22 Carl Chang /Department Manager	
Datum <i>Date</i>	Name/Stellung <i>Name/Position</i>	Unterschrift <i>Signature</i>	Datum <i>Date</i>
Sonstiges/ Other Aspects:			
Test period: 2015-12-14 – 2016-01-07 This test report supersedes test report no. 0114044541m3 001.			
Abkürzungen: ok / P = entspricht Prüfgrundlage fail / F = entspricht nicht Prüfgrundlage n.a. / N = nicht anwendbar		Abbreviations: ok / P = passed fail / F = failed n.a. / N = not applicable	
Dieser Prüfbericht bezieht sich nur auf das o.g. Prüfmuster und darf ohne Genehmigung der Prüfstelle nicht auszugsweise vervielfältigt werden. Dieser Bericht berechtigt nicht zur Verwendung eines Prüfzeichens.			
<i>This test report relates to the a. m. test sample. Without permission of the test center this test report is not permitted to be duplicated in extracts. This test report does not entitle to carry any safety mark on this or similar products.</i>			



Test Report No. : 0114044541m3 002
 Customer : Chi Mei Corporation
 Test Method : Total Cadmium, Lead, Mercury, Chromium
 - Ref. to IEC 62321-4:2013 and IEC 62321-5:2013
 Chromium (VI) – Ref. to EN 62321:2009 (IEC 62321:2008)
 (for Leather Material, Chromium (VI) - Ref. to ISO 17075:2007)
 PBBs, PBDEs – Ref. to IEC 62321-6:2015

2016-01-22

Sample Material Lab.-No.		LoD	WONDERLOY® PC-540 plastic / beige TCL151214-124
Cadmium (Cd)	mg/kg	2	n.d.
Lead (Pb)	mg/kg	2	n.d.
Mercury (Hg)	mg/kg	2	n.d.
Chromium VI (Cr VI)	mg/kg	2	n.d.
Sum of Polybrominated biphenyls (PBBs)	mg/kg	-	n.d.
Monobromobiphenyl	mg/kg	5	n.d.
Dibromobiphenyl	mg/kg	5	n.d.
Tribromobiphenyl	mg/kg	5	n.d.
Tetrabromobiphenyl	mg/kg	5	n.d.
Pentabromobiphenyl	mg/kg	5	n.d.
Hexabromobiphenyl	mg/kg	5	n.d.
Heptabromobiphenyl	mg/kg	5	n.d.
Octabromobiphenyl	mg/kg	5	n.d.
Nonabromobiphenyl	mg/kg	5	n.d.
Decabromobiphenyl	mg/kg	5	n.d.
Sum of Polybrominated diphenyl ethers (PBDEs)	mg/kg	-	n.d.
Monobromodiphenyl ether	mg/kg	5	n.d.
Dibromodiphenyl ether	mg/kg	5	n.d.
Tribromodiphenyl ether	mg/kg	5	n.d.
Tetrabromodiphenyl ether	mg/kg	5	n.d.
Pentabromodiphenyl ether	mg/kg	5	n.d.
Hexabromodiphenyl ether	mg/kg	5	n.d.
Heptabromodiphenyl ether	mg/kg	5	n.d.
Octabromodiphenyl ether	mg/kg	5	n.d.
Nonabromodiphenyl ether	mg/kg	5	n.d.
Decabromodiphenyl ether	mg/kg	5	n.d.

Notes:

- n.d. - not detected
- n.a. - not applicable
- LoD - Limit of Detection
- mg/kg is equal to ppm (parts per million)

	Cd	Cr(VI)	Pb	Hg	PBBs	PBDEs
Maximum permissible Limit acc. to 2011/65/EU (mg/kg)	100	1000	1000	1000	1000	1000



Produkte
Products

Test Report No. : 0114044541m3 002 2016-01-22
 Customer : Chi Mei Corporation
 Test Method : BBP/DBP/DEHP/DIBP - Organic solvent extraction, analyzed by GCMS (Ref. to DIN EN 62321-8:2014/ IEC 62321-8 (111/321/CD))
 Halogen - Following EN 14582; determination by I.C.

Sample		LoD	WONDERLOY® PC-540
Material			plastic / beige
Lab.-No.			TCL151214-124
Diethylhexylphthalate (DEHP)	mg/kg	50	n.d.
Dibutylphthalate (DBP)	mg/kg	50	n.d.
Benzylbutylphthalate (BBP)	mg/kg	50	n.d.
Diisobutylphthalate (DIBP)	mg/kg	50	n.d.

	BBP	DBP	DEHP	DIBP
Maximum permissible Limit acc. to (EU) 2015/863 (mg/kg)	1000	1000	1000	1000

Sample	WONDERLOY® PC-540		
Material/color	plastic / beige		
Lab.-No.	TCL151214-124		
Halogen	Unit	LoD	Result
Chlorine (Cl)	mg/kg	50	n.d.
Bromine (Br)	mg/kg	50	n.d.

Notes:

- n.d. - not detected
- n.a. - not applicable
- LoD - Limit of Detection
- mg/kg is equal to ppm (parts per million)

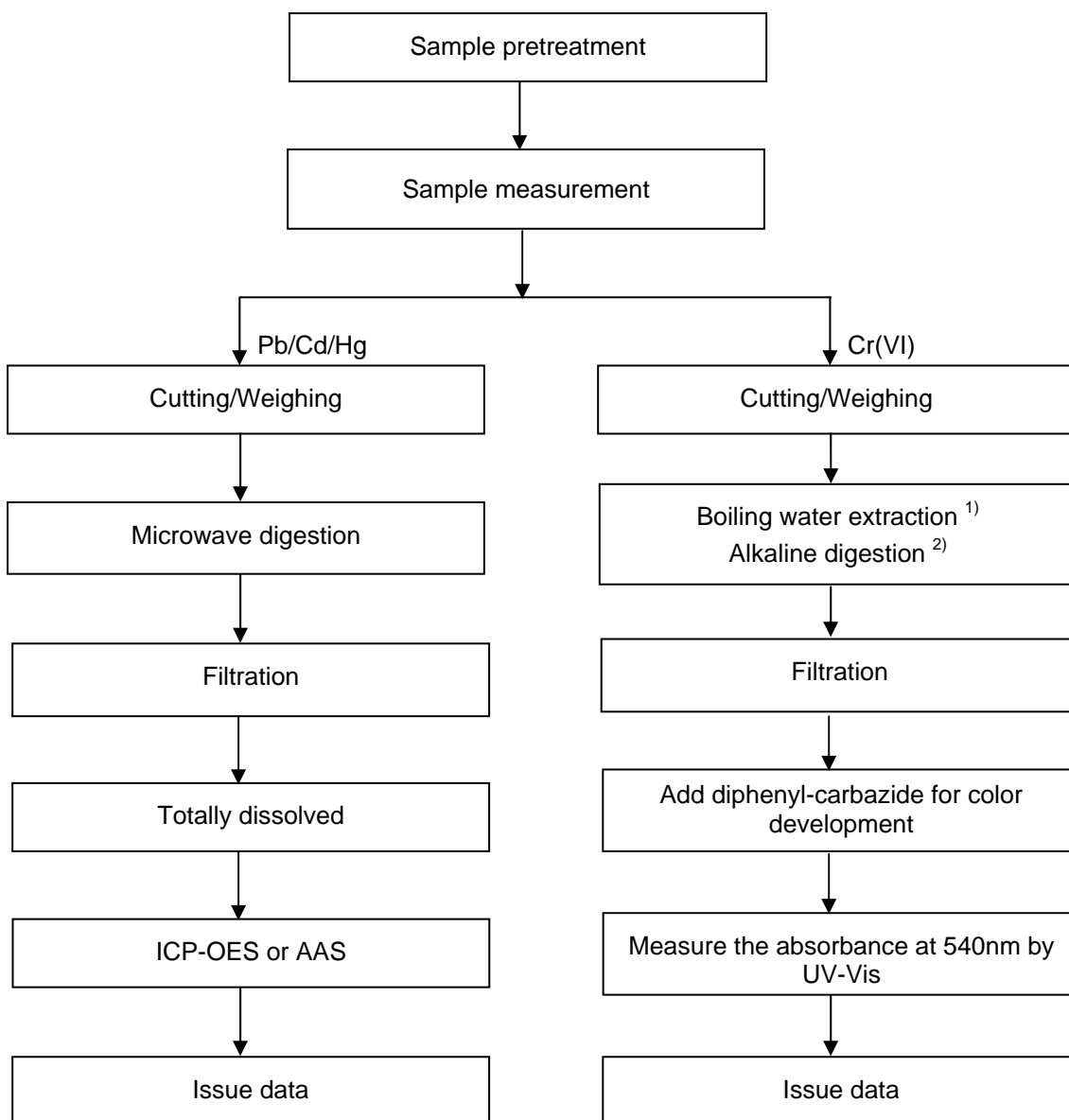
Test Sample


Test Report No. : 0114044541m3 002
Customer : Chi Mei Corporation

2016-01-22

Testing procedure:

RoHS (Pb, Cd, Hg, Cr(VI))



Notes: ¹⁾ For metallic material
²⁾ For non-metallic material

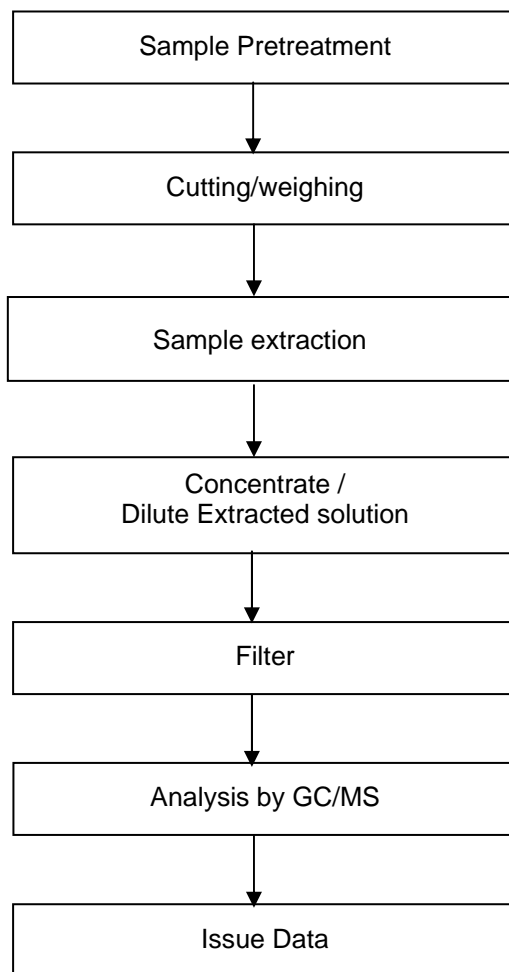


Test Report No. : 0114044541m3 002
Customer : Chi Mei Corporation

2016-01-22

Testing procedure:

RoHS (PBBs/PBDEs), DEHP/DBP/BBP/DIBP

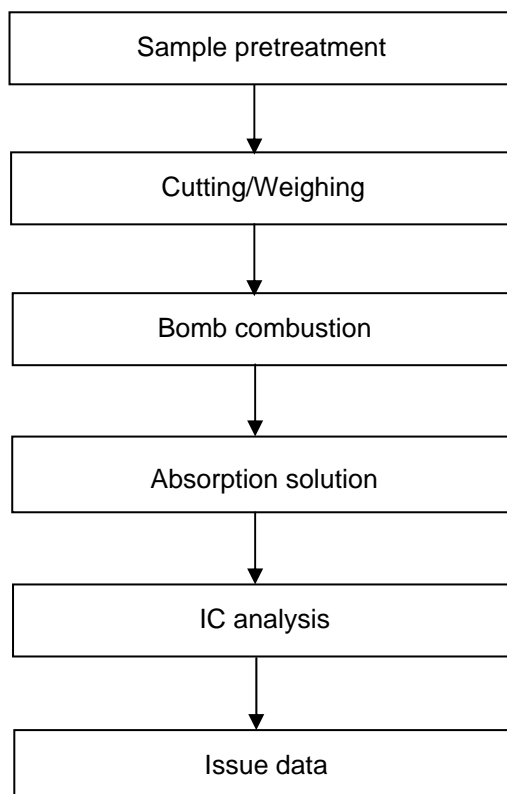


Test Report No. : 0114044541m3 002
Customer : Chi Mei Corporation

2016-01-22

Testing procedure:

Halogen



--- End of Test-Report ---

